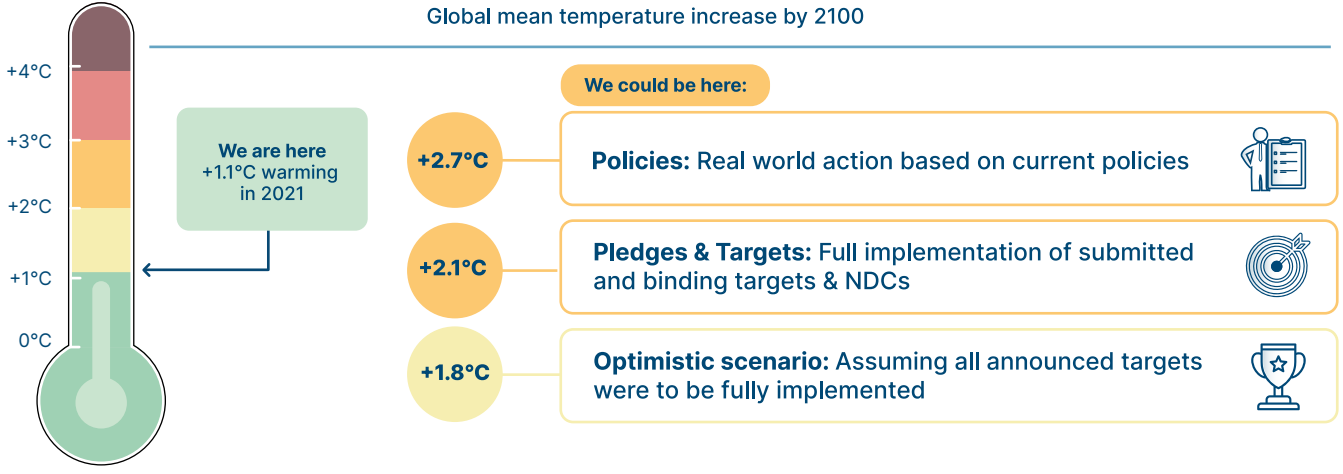




## SOME PROGRESS AT COP26, GAP TO 1.5°C REMAINS

Global mean temperature increase by 2100



## PROGRESS MUST ACCELERATE ACROSS SECTORS:

### CRITICAL SECTORS

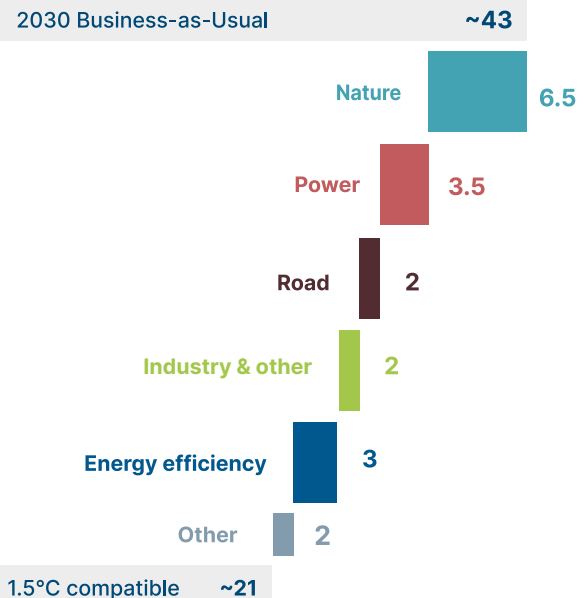
#### REDUCING METHANE EMISSIONS 40% BY 2030

MtCH<sub>4</sub>

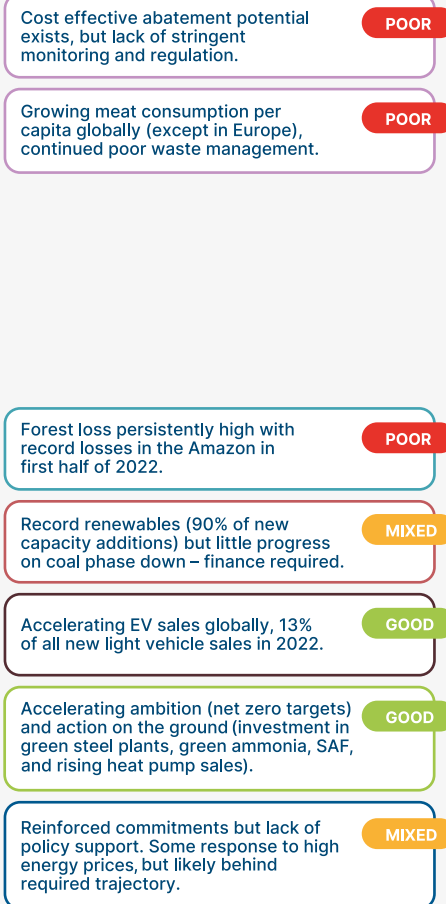


#### REDUCING CO<sub>2</sub> EMISSIONS 45% BY 2030

GtCO<sub>2</sub>



### PROGRESS SCORECARD



### ACTIONS TO ACCELERATE

